

SOLIDSOLUTIONS

SOLIDWORKS

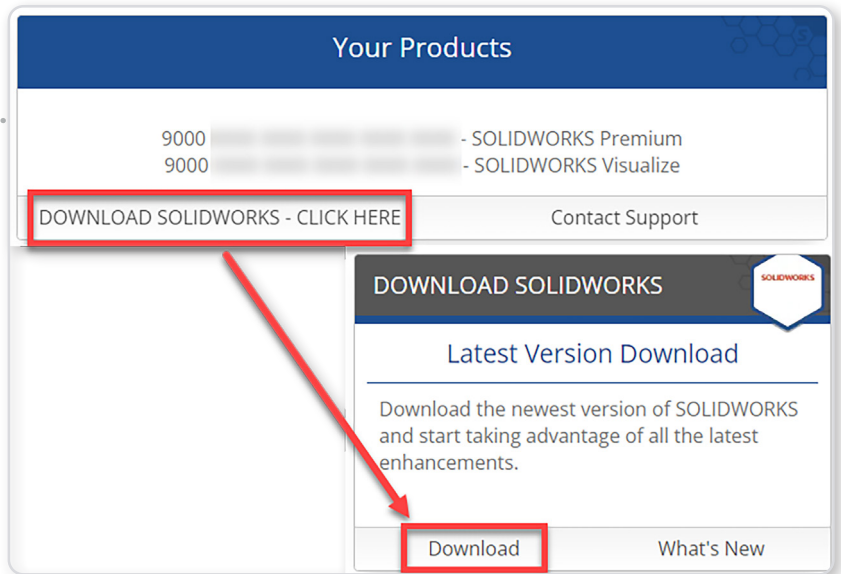
FAST START GUIDE



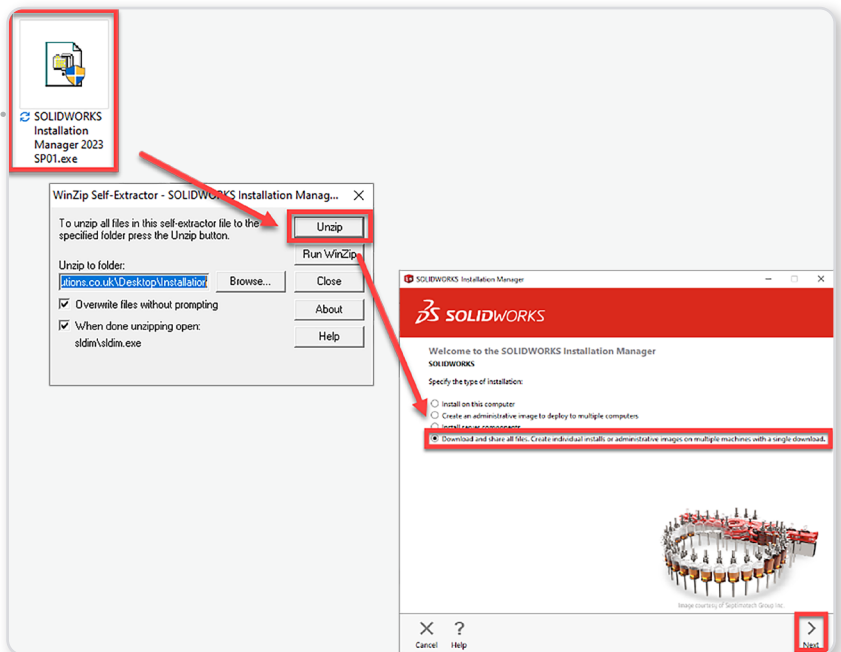
SOLIDWORKS FAST START GUIDE

This is the Fast Start guide for the clean installation of a standalone copy of SOLIDWORKS which was delivered to you via your Personalised Webpage. If you have any questions please call the support line on **01926 333 777**.

Check your serial numbers and download the SOLIDWORKS Installation Manager from your Getting Started webpage
www.solidsolutions.co.uk/welcome



Double click on the downloaded SOLIDWORKS Installation Manager Application to unzip it



Once unzipped, the installation manager should open automatically. If not, locate the setup.exe file and start it

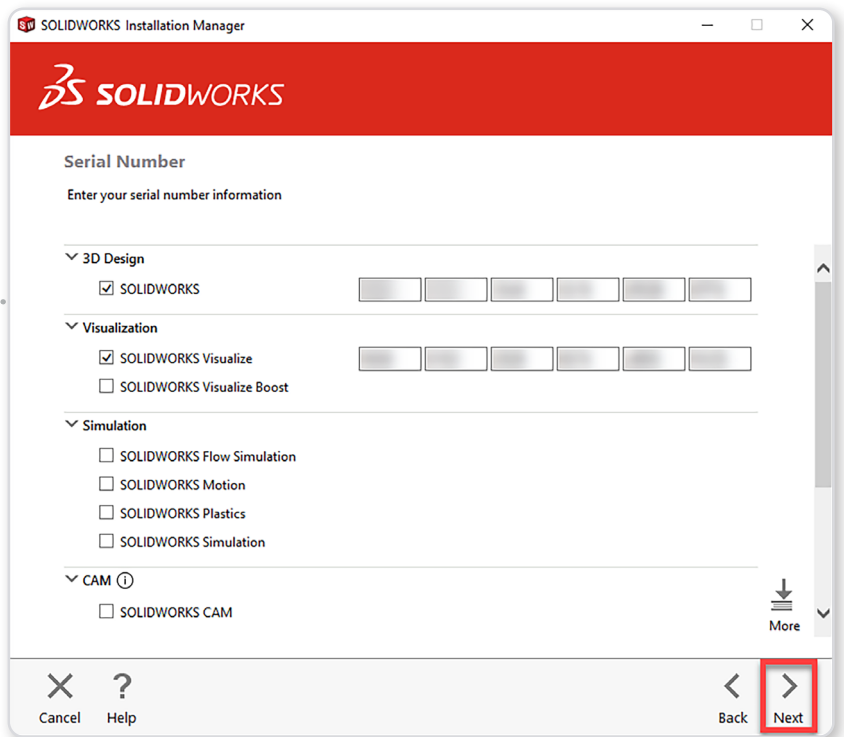
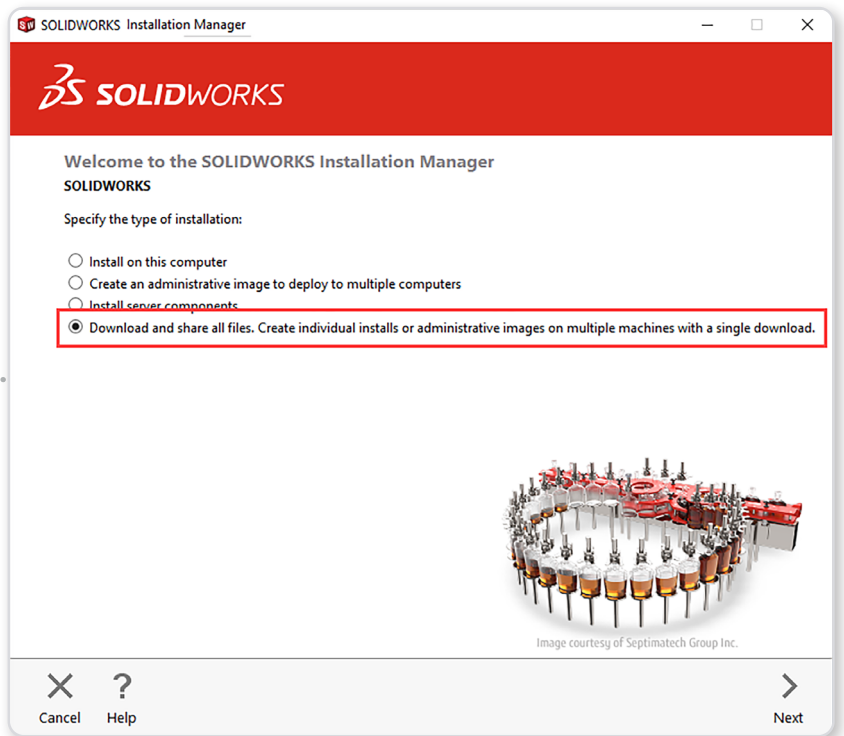
Go to page 3

It is recommend that you download the full file set. This is so that it can be transferred to other computers, and that you have source files available when needed.

Click Download and share all files, and click: **Next**

Insert your serial numbers found on your personalised webpage and click: **Next**

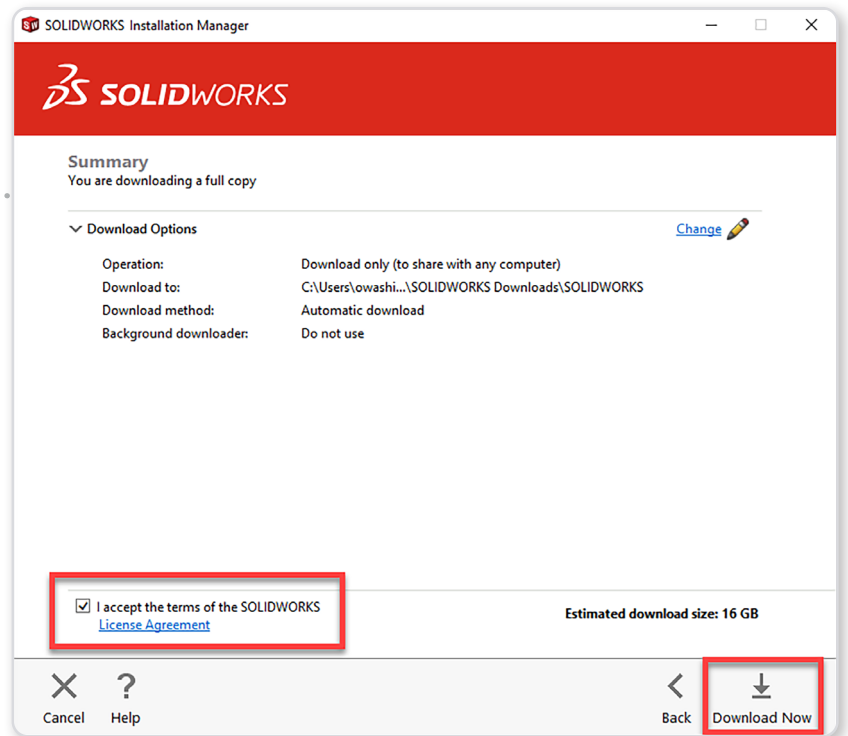
Go to page 4



Accept the terms of the SOLIDWORKS License Agreement and Click:

Download Now

The default location for the Download is in your Documents\SOLIDWORKS Downloads. The Download may be quite large and take some time



Once you have the SOLIDWORKS install files downloaded you can copy them onto any machine for reuse. The standard download location is C:\Users**User Name**\Documents\SOLIDWORKS Downloads.

The full download for SOLIDWORKS (using the "Download and Share All Files" option) is typically around 16GB in size however a default installation of SOLIDWORKS Standard could be as little as 5GB

If for any reason it is a lot less than this or there is a problem with the download, please contact support on **01926 333 777** or **support@solidsolutions.co.uk** for further assistance.

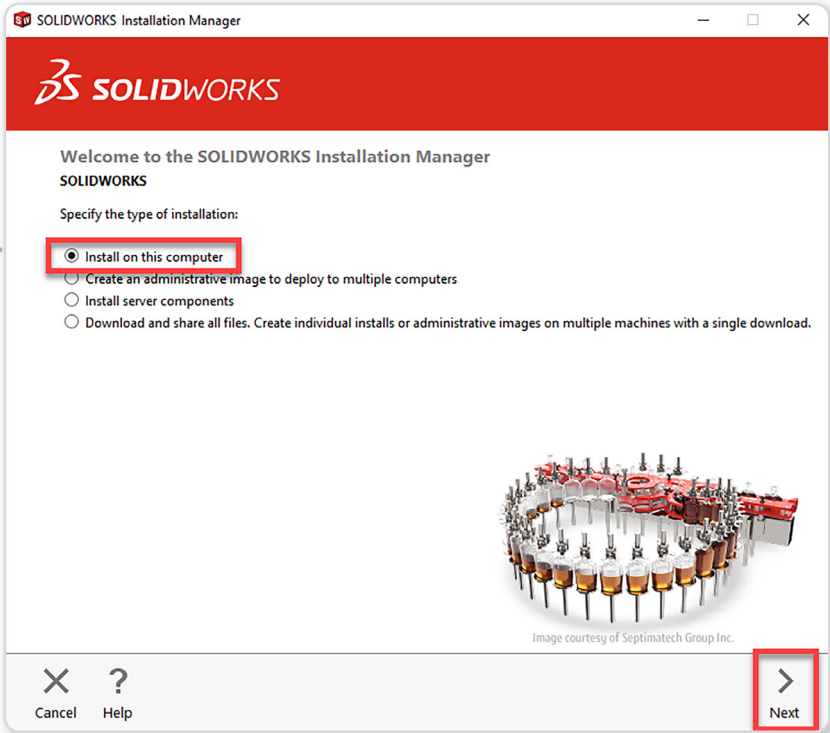
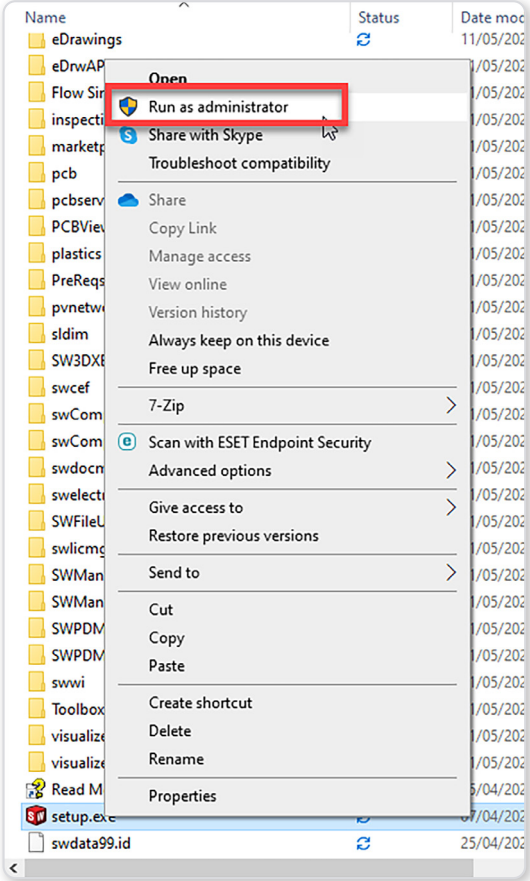
SOLIDWORKS: INSTALLING SOLIDWORKS

In your SOLIDWORKS Downloads folder, locate the folder for the download and navigate to Setup.exe

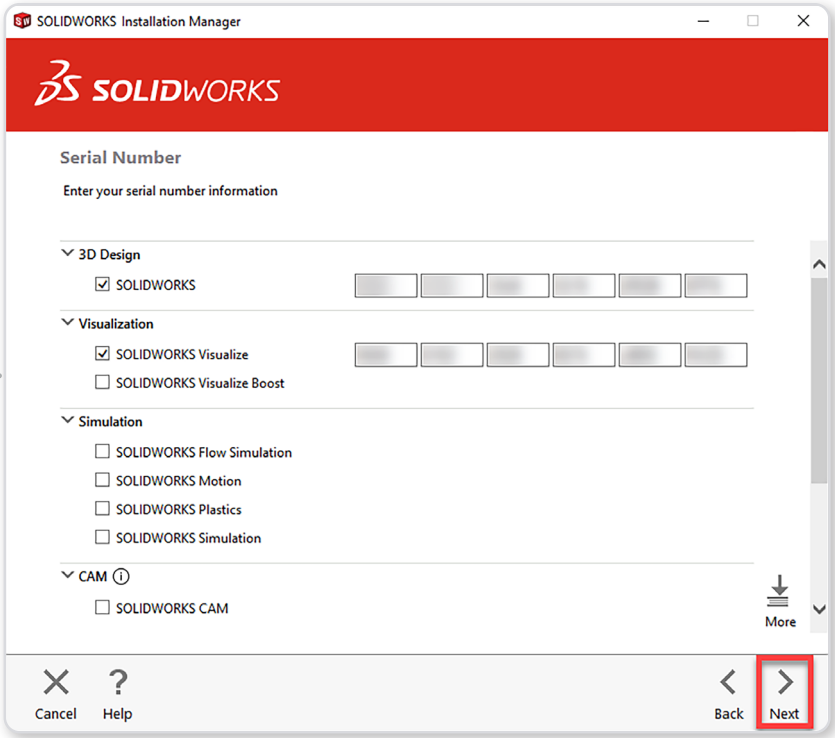
Right click on Setup.exe and click:
Run as Administrator

Once the Installation manager opens, Select **Install on this computer**, click:
Next

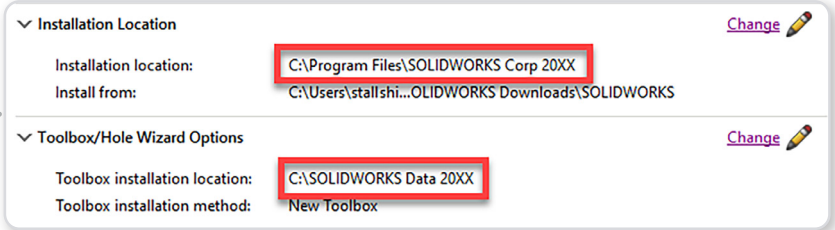
Go to page 6



Insert all your Serial Numbers against the products you have purchased and click:
Next

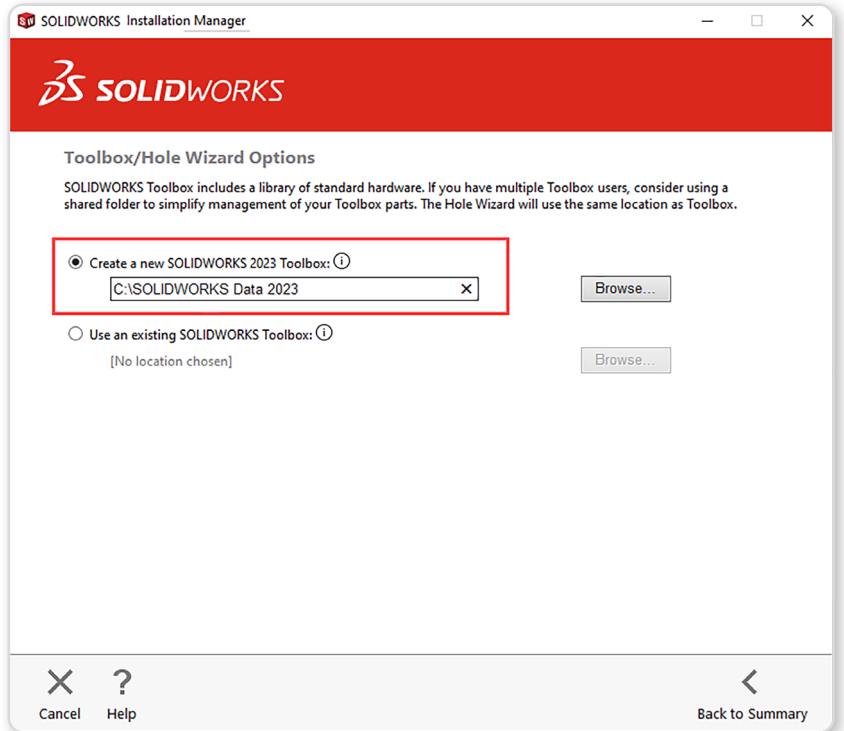
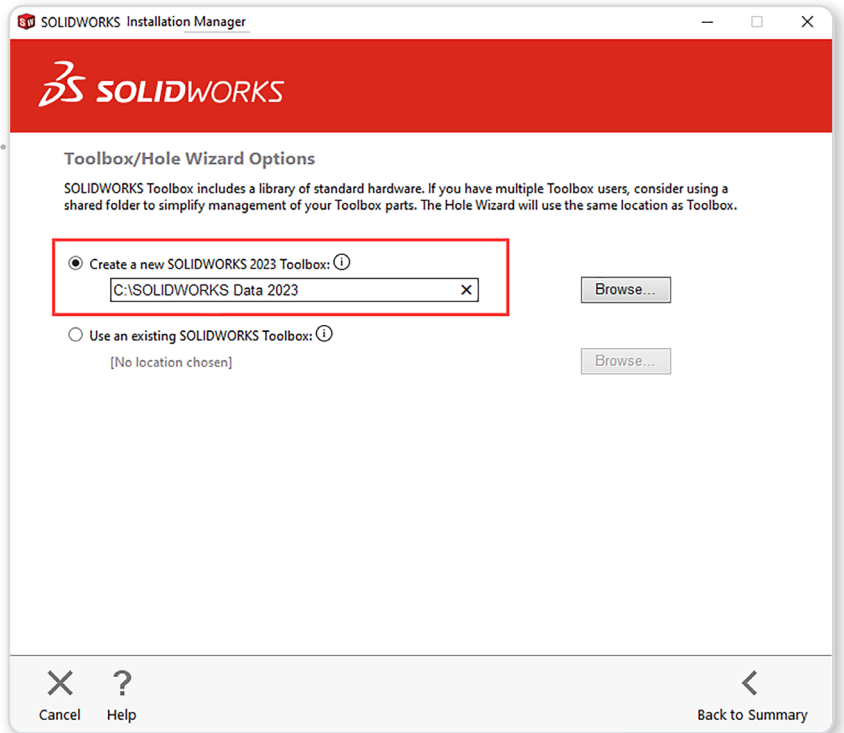


Alongside Installation Location, click '**Change**' and insert the SOLIDWORKS year version after SOLIDWORKS Corp.



Go to page 7

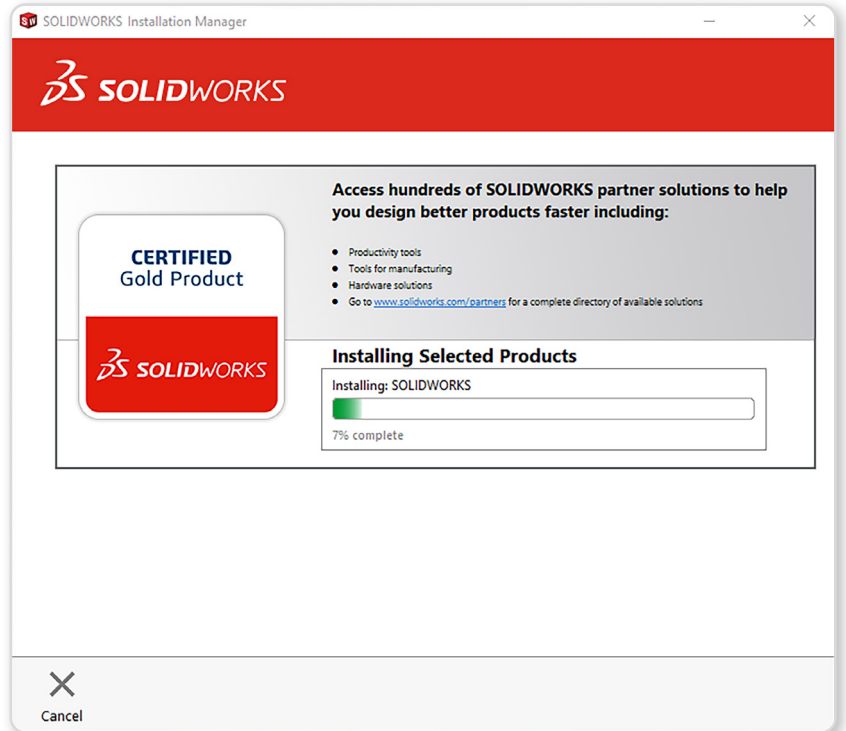
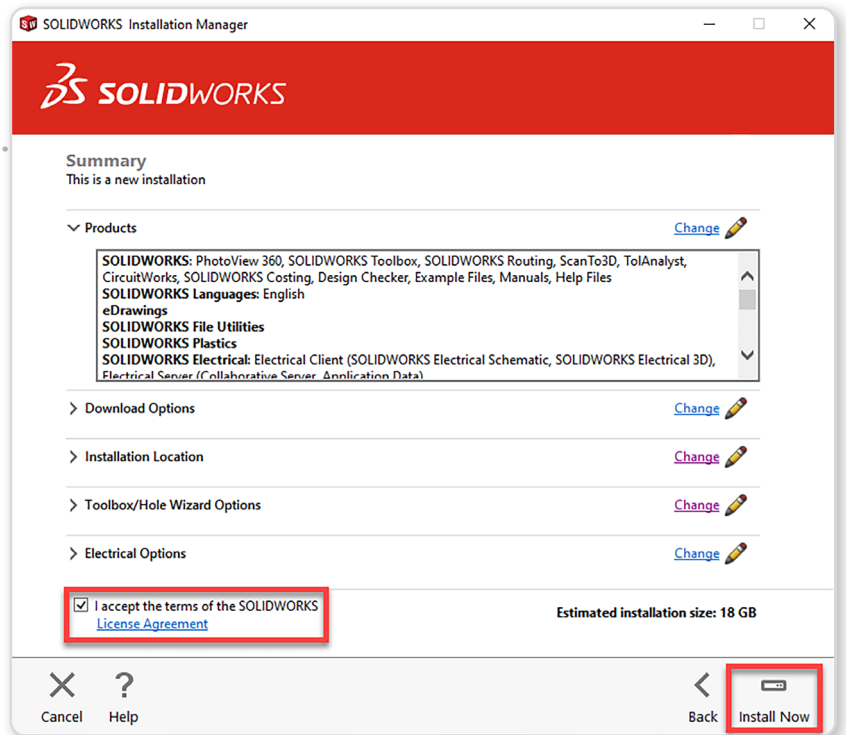
Alongside Toolbox/Hole Wizard Options, Click 'Change' and insert the SOLIDWORKS year version after.



Go to page 8

Accept the terms of the
SOLIDWORKS License
Agreement and Click:

Install Now



SOLIDWORKS should now be installed. Please restart the computer and open the application. If there are any issues, or you would like to ask any questions, please do not hesitate to get in touch with our technical support on **01926 333 777** or **support@solidsolutions.co.uk**



If you have any problems or questions during this guide, get in touch with us on 01926 333 777.



TRIMECH
GROUP